



Elegance & LiteJet

Adjusting Day Light Savings Settings

Centralite Systems, Inc.
6420 Wall Street
Mobile, AL 36695
Phone: (251) 607-9119
Fax: (251) 607-9117
©2007 Centralite Systems, Inc.

Overview

In the United States the Daylight Savings Time will begin on the second Sunday of March and end the first Sunday in November beginning in 2007. In order to change the Daylight Savings start and end Sunday on your Elegance or LiteJet system you must purchase new firmware (Version 7.0 or greater). Once you install the new Firmware chip you can use the latest Elegance Programming Software (version 2.90.6 or greater) or LiteJet Programming Software (version 2.01.01 or greater) to adjust the start and end date of Daylight Savings.

Note: If you are have a LiteJet 48 or Multiple Elegance MCPs the firmware for each MCP must be changed independently. Please specify which type system you have when ordering your Firmware.

If you choose not to purchase the firmware upgrade, your system will still function normally. However timed events that are set to happen at absolute times will be off by +/- 1 hour for the two weeks after the start/end of daylight savings time.

Firmware

Elegance

Homeowners with Elegance systems can purchase the newest Elegance firmware (Version 7.0 or greater) from their Authorized CentraLite Dealer. To find a dealer near you please refer to the CentraLite website:

<http://www.centralite.com/dealerSearch/DealerSearch.aspx>

LiteJet

Homeowners with LiteJet systems can purchase the newest LiteJet firmware (Version 7.0 or greater) from any Authorized CentraLite Dealer /Distributor or Certified LiteJet Installer. To locate a dealer or installer please refer to the CentraLite website.

<http://www.centralite.com/dealerSearch/DealerSearch.aspx>

Firmware Installation

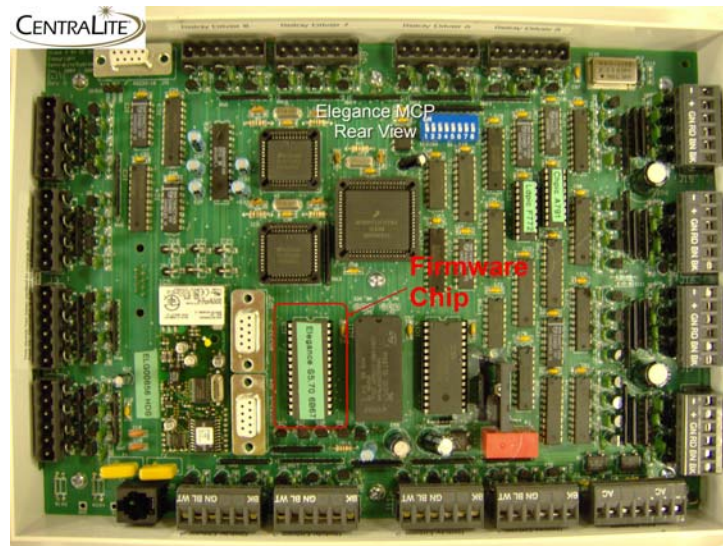
For each MCP in your system follow the following instructions.

Elegance

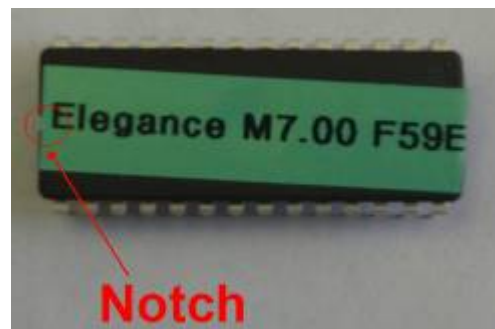
To install the new firmware chip remove the MCP from its enclosure. Turn the MCP over to expose the back.

Locate the Firmware Chip (IC11). IT is located next to the 2 RS-232 ports.

Unplug the Power connector before proceeding. The power connector can be found in the picture at the bottom right. It is labeled "AC AC"



Observe the Notch on one end of the firmware chip. When replacing the chip make sure to orient the new chip so that its notch is in the same position as the old chip.

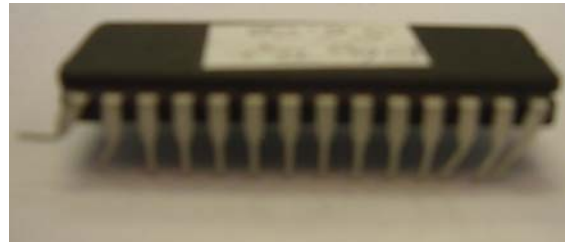


Use a small flat head screwdriver or an EEPROM chip puller to remove the firmware chip.

Place the new chip in the socket observing the same directional orientation.



BE EXTREMELY CAREFUL NOT TO BEND THE PINS ON THE CHIP WHEN CHANING THE CHIP.

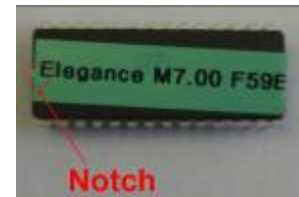


Insert the new chip and then plug the power connector back in. Then return the MCP to its enclosure.

LiteJet

Remove the lower cover of the LiteJet panel to expose the MCP. Locate the MCP and find the firmware chip (IC6).

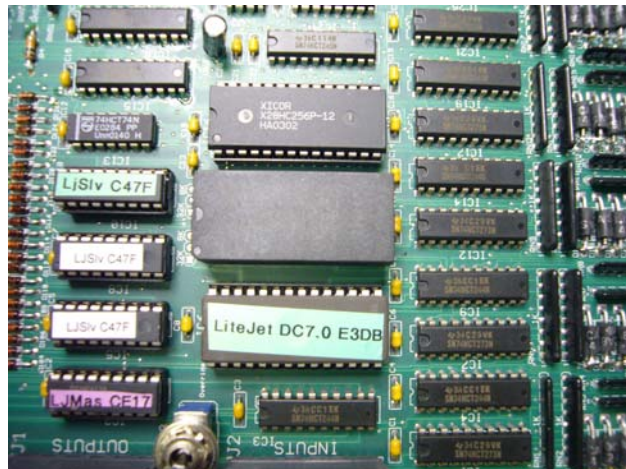
Remove the power connector. It can be found on the left hand side of the picture shown.



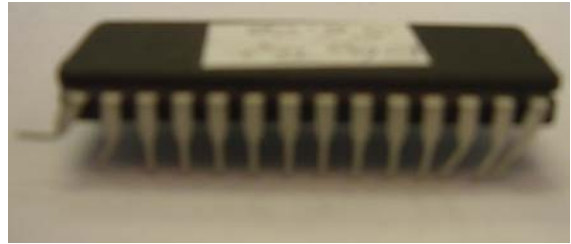
Notice the directional notch in the firmware chip.

Use a small flat head screwdriver or an EEPROM chip puller to remove the firmware chip.

Place the new chip in the socket observing the same directional orientation.



BE EXTREMELY CAREFUL NOT TO BEND THE PINS ON THE CHIP WHEN CHANING THE CHIP.



Plug the power connector back in and replace the lower cover on the enclosure.

Software Programming

To adjust the daylight savings start and end time you must download and install the latest LiteJet or Elegance programming software. For LiteJet the software version must be at least 2.01.01. The Elegance software must be at least 2.90.6.

Follow the directions for your system to update the settings.

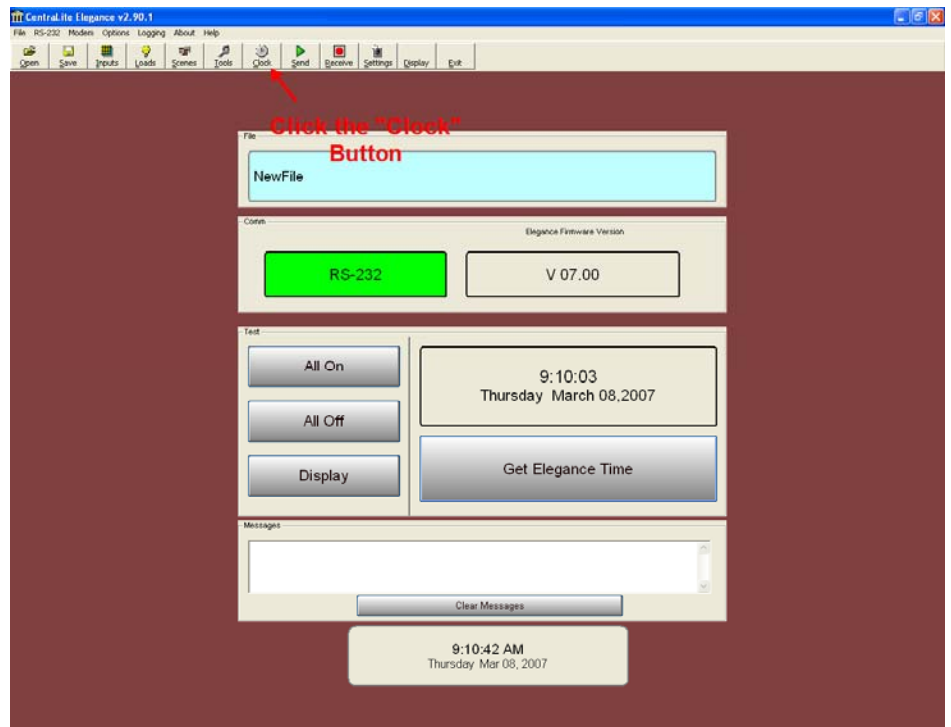
Elegance

You can download the Elegance Software from the following link:

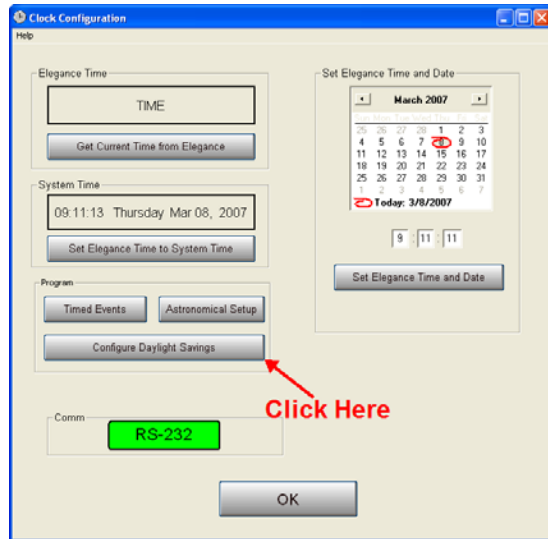
<http://www.centralite.com/support/Elegance/software/Setup290.exe>

Open the Software. Ensure that you system is connected and you have a Green RS232 connection. Verify that your Firmware Version is V07.00 or greater before proceeding. You can see the Version next to the Green RS232 window.

Now click the "Clock" button to access the clock settings page.



Once you see the clock settings page click the "Configure Daylight Savings" Settings button.



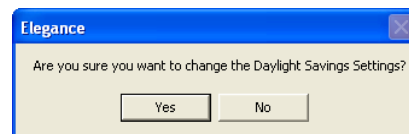
Next adjust the values to your local settings.

In the US Daylight Savings begins on the 2nd Sunday of March and ends on the 1st Sunday in November.

When you are finished click the "OK/Send" button to apply the settings.

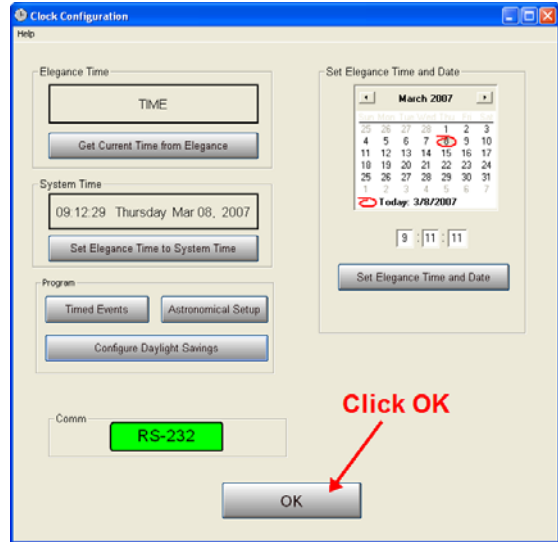


Click "YES" to confirm the settings.



Adjusting Day Light Savings Settings

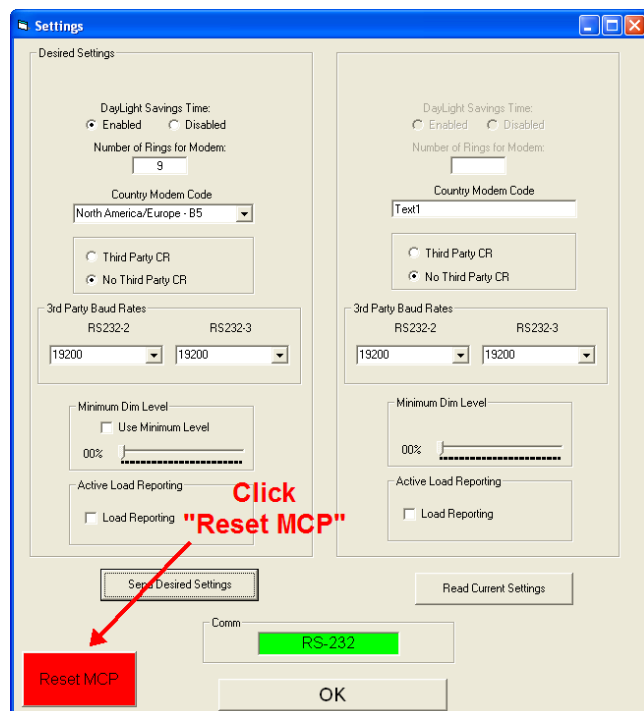
Click "OK" on the clock settings page to return to the Main Page.



Click the "Settings" page to show the settings window.



On the Settings page click the red "Reset MCP" so the new settings will take effect.



When you are finished click the “OK” button to return to the main page.

You have now successfully set the Daylight Savings settings. You can now exit the program.

The screenshot shows a 'Settings' dialog box with two columns of controls. The left column is titled 'Desired Settings' and includes: 'DayLight Savings Time' with 'Enabled' selected; 'Number of Rings for Modem' set to 9; 'Country Modem Code' set to 'North America/Europe - B5'; 'Third Party CR' with 'No Third Party CR' selected; '3rd Party Baud Rates' for RS232-2 and RS232-3 both set to 19200; 'Minimum Dim Level' with 'Use Minimum Level' unchecked and a slider at 00%; and 'Active Load Reporting' with 'Load Reporting' unchecked. The right column is titled 'DayLight Savings Time' and includes: 'DayLight Savings Time' with 'Enabled' selected; 'Number of Rings for Modem' set to 9; 'Country Modem Code' set to 'Text1'; 'Third Party CR' with 'No Third Party CR' selected; '3rd Party Baud Rates' for RS232-2 and RS232-3 both set to 19200; 'Minimum Dim Level' with 'Use Minimum Level' unchecked and a slider at 00%; and 'Active Load Reporting' with 'Load Reporting' unchecked. At the bottom, there are buttons for 'Send Desired Settings', 'Read Current Settings', 'Comm' (set to RS-232), 'Reset MCP', and 'OK'. A red arrow points to the 'OK' button with the text 'Click OK'.

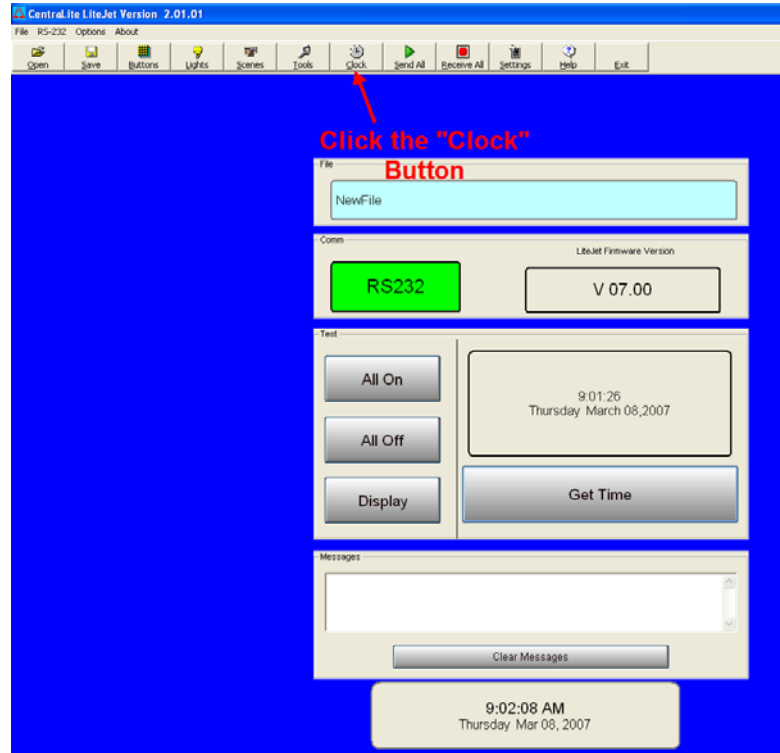
LiteJet

You can download the LiteJet Software from the following link:

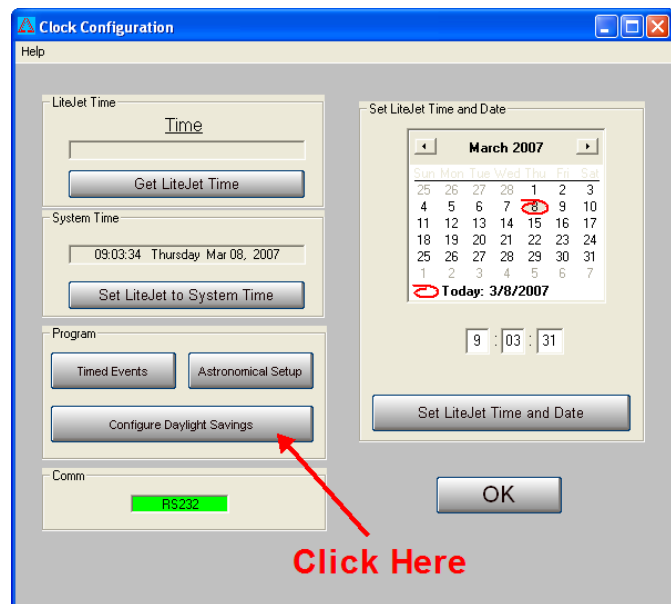
http://www.centralite.com/support/LiteJet/software/LiteJet_210_Setup.exe

Open the Software. Ensure that you system is connected and you have a Green RS232 connection. Verify that your Firmware Version if V07.00 or greater before proceeding. You can see the Version next to the Green RS232 window.

Now click the "Clock" button to access the clock settings page.



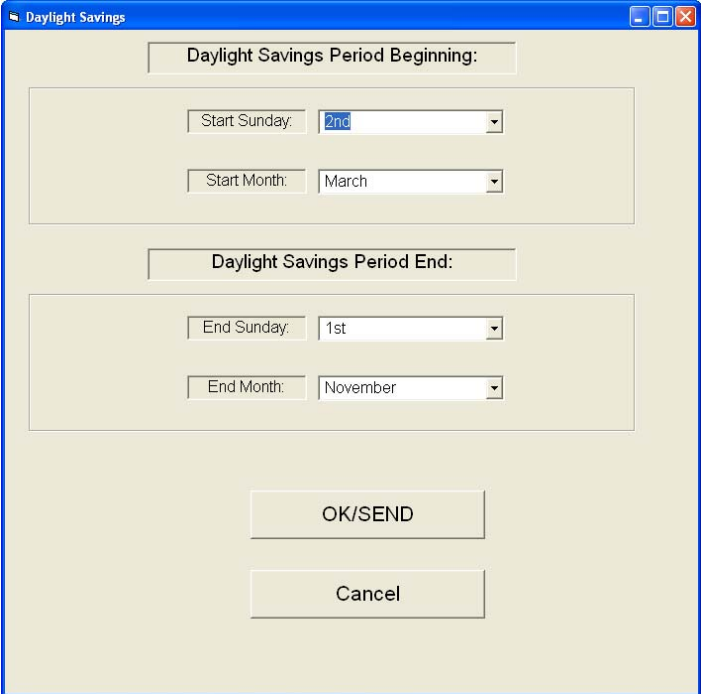
Once the Clock Configuration page is shown click the "Configure Daylight Savings" button.



Next adjust the values to your local settings.

In the US Daylight Savings begins on the 2nd Sunday of March and ends on the 1st Sunday in November.

When you are finished click the “OK/Send” button to apply the settings.

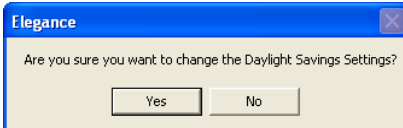


The "Daylight Savings" dialog box is shown with the following settings:

- Daylight Savings Period Beginning:**
 - Start Sunday: 2nd
 - Start Month: March
- Daylight Savings Period End:**
 - End Sunday: 1st
 - End Month: November

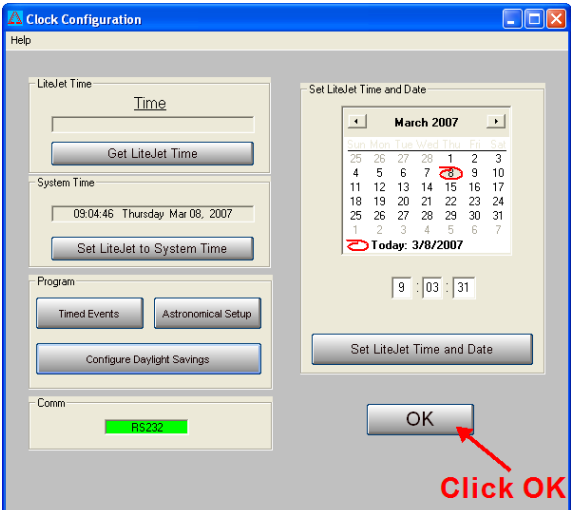
Buttons: OK/SEND, Cancel

Click “YES” to confirm the settings.



The "Elegance" dialog box asks: "Are you sure you want to change the Daylight Savings Settings?" with "Yes" and "No" buttons.

Click “OK” on the clock settings page to return to the Main Page.

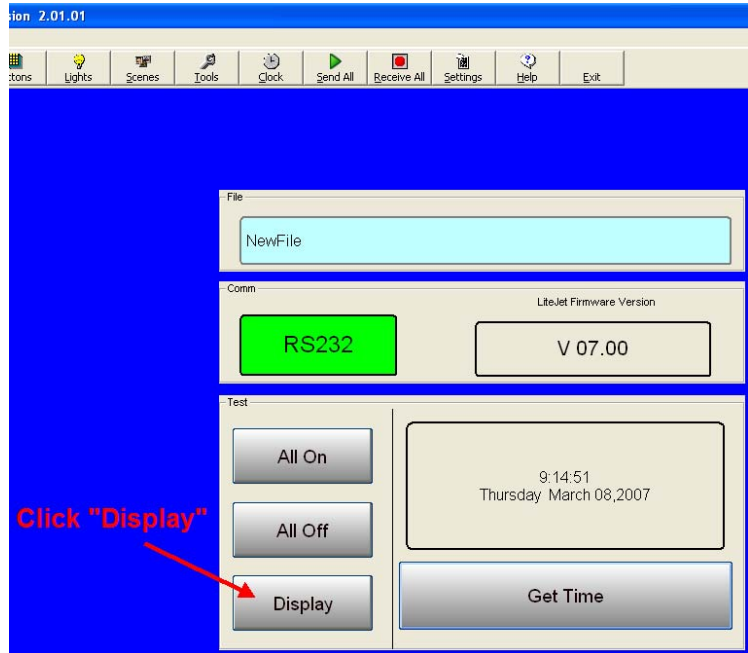


The "Clock Configuration" dialog box is shown with the following settings:

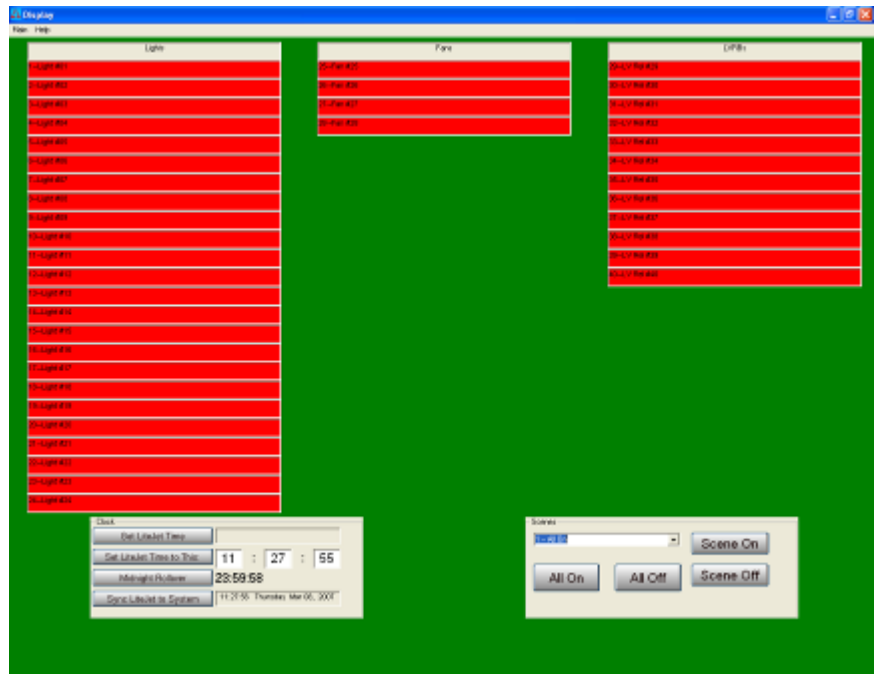
- LiteJet Time:** Time (empty)
- System Time:** 09:04:45 Thursday Mar 08, 2007
- Program:** Timed Events, Astronomical Setup, Configure Daylight Savings
- Comm:** RS232
- Set LiteJet Time and Date:** March 2007 calendar showing Today: 3/8/2007, Time: 9:03:31

Buttons: Get LiteJet Time, Set LiteJet to System Time, Set LiteJet Time and Date, OK (indicated by a red arrow and text "Click OK")

You must next roll the clock through Midnight to apply the new settings. To set the time click the “Display” Button.



1. Click “Midnight Rollover”
2. Click “Get LiteJet Time”
3. Repeat Step 2 until the displayed time is after 0:00.
4. Click “Sync LiteJet to System” to set the LiteJet time to your computer’s time.
5. Click the Get LiteJet Time button to verify that the time is correct.



You have successfully set the Daylight Savings options for your LiteJet. You can now exit the program.