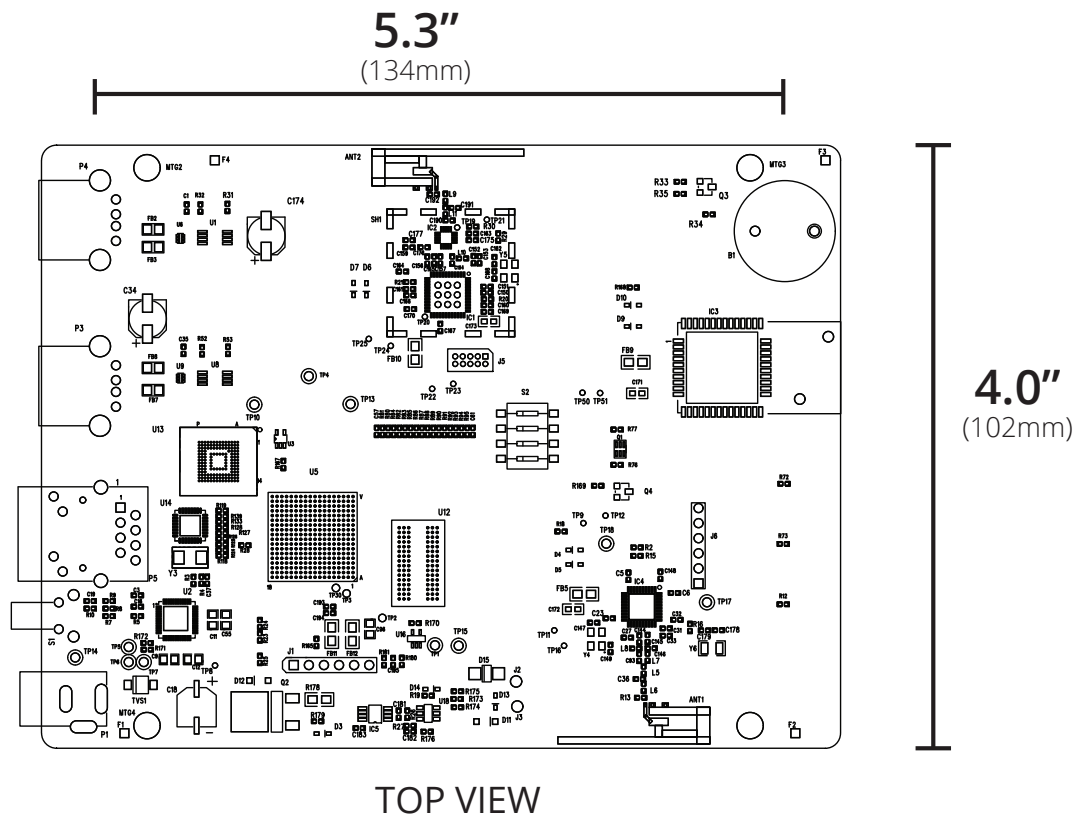


## Product Overview

The Centralite Hub is a multi-interface product that functions as an Internet of Things device controller. Whether you have one smart device or 100, a single Centralite Hub can create a reliable and connected ecosystem. The Centralite Hub communicates with multiple connected products, regardless of their wireless protocol. The product provides three RF radios (ZigBee, Z-Wave, and Bluetooth LE), a battery backup, and two wired interfaces (10/100 ethernet, USB) for data portals.

## Dimensions



### In the Box:

- 1x - Hub
- 1x - Quick Start Guide
- 4x - AA Battery

- 1x - Power Supply Plug
- 1x - Ethernet Cable

### Key Features:

- ZigBee Radio
- Z-Wave Radio
- Bluetooth Low Energy Radio
- Multiple USB ports
- Ethernet Port
- Multi-use tact switch
- 3-LEDs for status indication
- Battery backup

# Compatibility

The Centralite Hub features out-of-the-box compatibility with ZigBee HA 1.2, Z-Wave, Bluetooth LE, and Wi-Fi devices.

---

## Technical Specifications

### Electrical

Rated: 5VDC, 2A

### Environmental

Operating Temperature: 0° to 40°C

### Shipping / Storage

Temperature: -20° to 50°C  
Humidity Range: 0 to 90% RH.  
(non-condensing)

### Radios

**NOTE:** All three radios may be active simultaneously  
ZigBee:

Silicon Labs: EM3587

Skyworks PA: 18dBm

Bluetooth Low Energy: TI CC2541

Z-Wave:

Sigma Designs: ZM5304

### Memory

Program Memory: 2GB Flash Memory

Random Access Memory: DDR3, 512MB

### USB Ports

USB 2.0: 480Mbps

### Indicators

3x LED indicators

Internal Piezoelectric Sounder: 80dB

### CPU

Core Processor: ARM A8

### Wireless RF

Protocol: ZigBee HA 1.2

Z-Wave

Bluetooth LE

TX Strength: +18 dBm

Range: 100+ ft. (30+ m) L.O.S.

Approvals: 

---

## Approvals

This device complies with Part 15 of the FCC rules. Operation is subject to the following two conditions:

- (1) This device may not cause harmful interference and
- (2) This device must accept any interference received, including interference that may cause undesired operation.

Conforms to FCC Part 15B

FCC ID: T3L-SS009

IC: 12192A-SS009



Industry Canada licence-exempt RSS Standards. Operation is subject to the following two conditions: (1) This device may not cause harmful interference, and (2) This device must accept any interference received, including interference that may cause undesired operation.

Under Industry Canada regulations, this radio transmitter may only operate using an antenna of a type and maximum (or lesser) gain approved for the transmitter by Industry Canada. To reduce potential radio interference to other users, the antenna type and its gain should be so chosen that the equivalent isotropically radiated power (e.i.r.p.) is not more than that necessary for successful communication.

This equipment complies with FCC and IC radiation exposure limits set forth for an uncontrolled environment. This equipment is in direct

contact with the body of the user under normal operating conditions. This transmitter must not be co-located or operating in conjunction with any other antenna or transmitter.

Changes or modifications not expressly approved by Centralite Systems, Inc. could void the user's authority to operate the equipment.

Le présent appareil est conforme aux CNR d'Industrie Canada applicables aux appareils radio exempts de licence. L'exploitation est autorisée aux deux conditions suivantes: (1) l'appareil ne doit pas produire de brouillage, et (2) l'utilisateur de l'appareil doit accepter tout brouillage radioélectrique subi, même si le brouillage est susceptible d'en compromettre le fonctionnement.

Conformément à la réglementation d'Industrie Canada, le présent émetteur radio peut fonctionner avec une antenne d'un type et d'un gain maximal (ou inférieur) approuvé pour l'émetteur par Industrie Canada. Dans le but de réduire les risques de brouillage radioélectrique à l'intention des autres utilisateurs, il faut choisir le type d'antenne et son gain de sorte que la puissance isotrope rayonnée équivalente (p.i.r.e.) ne dépasse pas l'intensité nécessaire à l'établissement d'une communication satisfaisante.

## Contact Sales

For more information about sales or distribution,  
please contact:

877-466-5483

+1 251-607-9119 (Int'l)

sales@centralite.com

Centralite Systems, Inc.  
1701 Industrial Park Drive  
Mobile, AL 36693

<http://centralite.com>

**Notice:** Any content, factual information, or specifications containing errors in this document are solely inadvertent and will be corrected upon discovery. Specifications for unreleased/planned products are subject to change.